

Bedpan Washers

Revo 100 Series



- Designed and constructed in compliance with the European Directives and Norms
- Complete disinfection
- Easy to install and simple to use
- Made of Stainless Steel
- 3 different washing programs
- Microprocessor controlled.



tuttnauer

Sterilization & Infection Control Products

supplyLAB
www.supplylab.pt

The Revo is a bedpan washer of a new and modern concept, conceived to be innovative, the **Revo** is an expression of sophisticated and advanced technology. Made entirely of stainless steel **AISI 316**, with an aesthetically pleasing and harmonious design, a strong structure and a very modern one-piece wash chamber with a highly efficient self-cleaning system.

The machine is designed and constructed in compliance with the European Directives and standards concerning safety and hygiene all based on thermal disinfection. The Revo bedpan washer is a point of reference in terms of user safety, efficiency and versatility



**Revo
100**

Functionality

Designed as a multifunctional aid, capable of holding all the receptacles commonly used in hospitals.

100 Series:

- M** - Manual Door **A** - Automatic door
H - Floor Standing **E** - Economic Floor Standing

Safety features

The numerous safety features include: door lock for the entire duration of the cycle, machine shutdown in the case of clogged discharge outlet, door opening possible only once disinfection is complete, disinfection check, acoustic alarm to indicate faults, 24V controls etc.

TECHNICAL SPECIFICATIONS - Revo 100

SIZE	
Width	600 mm.
Depth	600 mm.
Height	840 mm.
Net weight	87 Kg.
Gross weight	92 Kg.
CONNECTIONS	
Discharge pipe	Diam. 90 mm.
Electrical connection	230V./3/50Hz. 400V./3+N/50Hz.
Total power	5400 W.
Washing pump power	900 W.
Hydraulic connection- cold water	3/4" GAS
Pressure min./max.	1.0 - 5.0 bar
Flow rate	24 lt/min. a 2 bar pres. dynamic
Temperature min./max	10° - 15°C.
Hydraulic connection - hot water	3/4" GAS
Pressure min./max.	1.0 - 5.0 bar
Flow rate	24 lt/min. a 2 bar pres. dynamic
Temperature min./max	45° - 60°C.
Noise	58 dBA
Permitted room temperature - min./max	+5°C./+40°C.



Wash chamber

Excellent results have been achieved by totally eliminating areas where dirt tends to collect and giving rounded corners a wide curvature allowing liquids to drain off efficiently.

Consumption

Careful design backed by numerous testing has allowed our research centre to produce a high performance steam generator that offers excellent energy conservation thanks to a special integral insulation system.

Flexible programming

The LCD display shows the stage of the cycle, the type of programme, the temperature and faults at any given moment. The various programming levels are protected by an access code and can be accessed using the keypad to adapt the machine functions to your specific requirements.

Computerised management

A latest generation microchip controls the machine's electronics. The microchip is powerful and reliable and offers numerous advantages such as easy programming. The selfdiagnosis function offers statistics concerning the functioning and use of the machine as well as a record of historical events.

Remote link functions

An interface channel for RS232 communication on Modbus file is present. Thanks to this link the historic record of events can be printed.

Automatic door

The door opens automatically and is controlled by a foot-operated pedal.

Accessories

- Limescale-remover dispenser.
- Special racks and holders are available for all the models with the exception of HE/ HEA models.
- Built-in detergent pump dispenser is a standard for all models with exception of HE/ HEA models

TECHNICAL SPECIFICATIONS - Revo 100H

SIZE

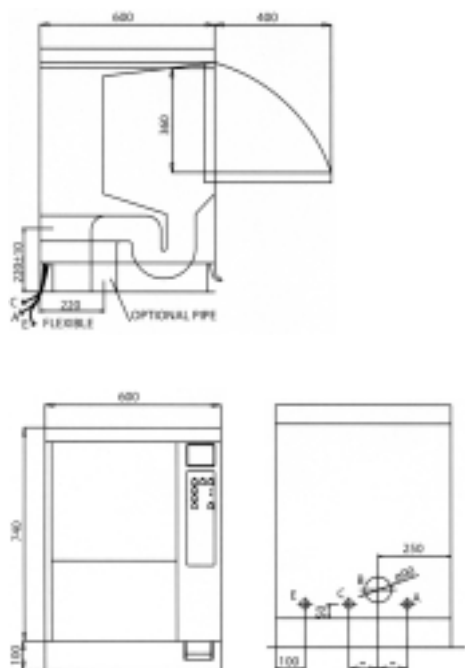
Width	540 mm.
Depth	600 mm.
Height	1425 mm.
Net weight	96 Kg.
Gross weight	107 Kg.

CONNECTIONS

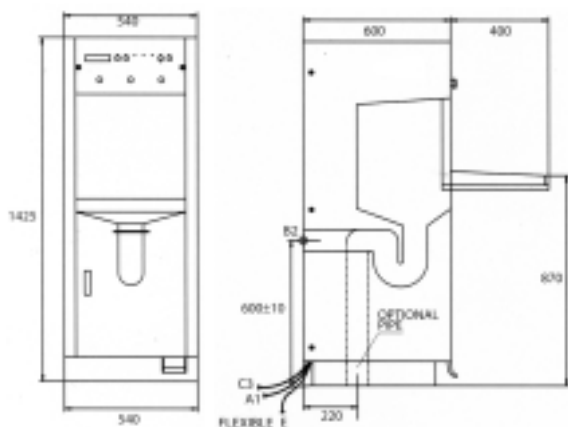
Discharge pipe	Diam. 90 mm.
Electrical connection	230V./3/50Hz. 400V./3+N/50Hz.
Total power	5400 W.
Washing pump power	900 W.
Hydraulic connection - cold water	3/4" GAS
Pressure min./max.	1.0 - 5.0 bar
Flow rate	24 lt/min. a 2 bar pres. dynamic
Temperature min./max.	10° - 15°C.
Hydraulic connection - hot water	3/4" GAS
Pressure min./max.	1.0 - 5.0 bar
Flow rate	24 lt/min. a 2 bar pres. dynamic
Temperature min./max.	45° - 60°C.
Noise	58 dBA
Permitted room temperature min./max	+5°C./+40°C.



Revo 100



Revo 100H



tuttnauer

Sterilization & Infection Control Products

Tuttnauer Europe b.v.

Paardeweide 36 P.O.B. 7191
4800 GD Breda
The Netherlands
Tel: (31) 76 5423510
Fax: (31) 76 5423540
Email: info@tuttnauer.nl

Tuttnauer USA Co.

25 Power Drive Hauppauge
NY, 11778, USA
Tel: (800) 624 5836,
(631) 737 4850
Fax: (631) 737 07 20
Email: info@tuttnauer.com

supplyLAB

www.supplylab.pt
geral@supplylab.pt

Cacém Park - Edifício 9
Estrada de Paço de Arcos nº88
2739-512 Agualva Cacém
T +(351) 21 4278700
F +(351) 21 4278709

www.tuttnauer.com